

Truckee 1.7: Run History in Model Info Dialog for RiverWare 7.1

Phil Weinstein, David Neumann, Edie Zagona, CADSWES, 2-04-2017, revised 2-05.

... revision: 3-03-2017: *correction to document citation on page 4.*

R:\doc\RunHistory\2017\Truckee1p7-RunHistInModelInfoDlg.docx

The RiverWare 7.1 "Model Info" dialog has been revised with the following enhancements:

1. The "Save History" list has been changed to a single line, as information for only the last save operation had been presented. This text can be selected and copied to the system clipboard.
2. A new "Run History" list is now presented, with the ability to limit the number of items to be presented and saved in the model file. This supports a *"Clear Run History"* operation, and a *"Copy selected items"* context menu operation which copies the content of the *selected* run history items to the system clipboard in both "formatted" and "unformatted" tabular form. (*Read more below*).

RiverWare 7.0 (prior version)

Model Info

Save History

User	Date	Application
philw	02-04-2017 11:50:36	RiverWare 7.0.2

Comment

Before RPL reconciliation refactoring.

OK Apply Reset Cancel

Run History

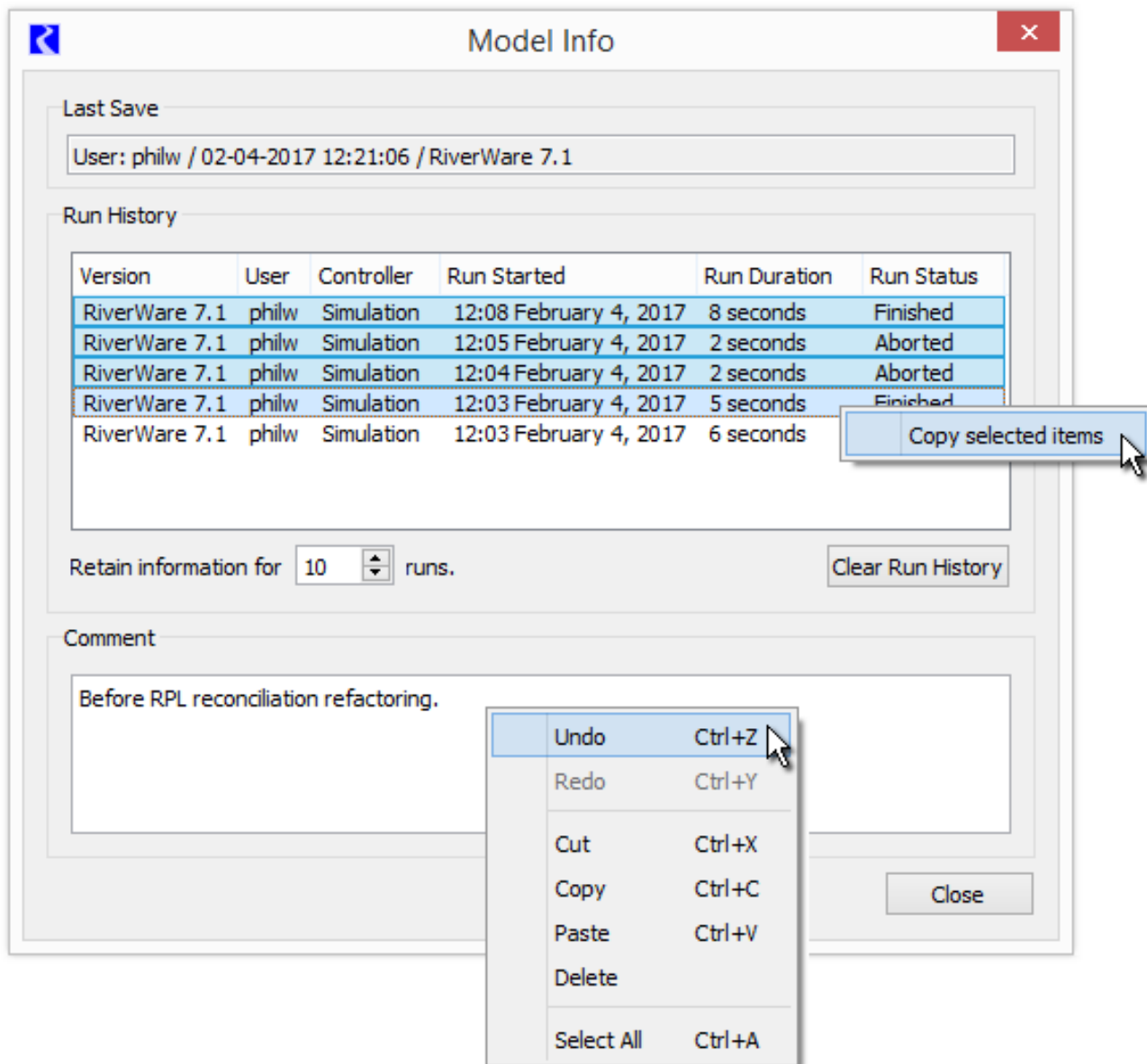
Version	User	Controller	Run Started	Run Duration	Run Status
RiverWare 7.1	philw	Simulation	12:08 February 4, 2017	8 seconds	Finished
RiverWare 7.1	philw	Simulation	12:05 February 4, 2017	2 seconds	Aborted
RiverWare 7.1	philw	Simulation	12:04 February 4, 2017	2 seconds	Aborted
RiverWare 7.1	philw	Simulation	12:03 February 4, 2017	5 seconds	Finished
RiverWare 7.1	philw	Simulation	12:03 February 4, 2017	6 seconds	Finished

Retain information for 10 runs.

Clear Run History

3. The Comment editor has been simplified. Edits to the comment text are now immediately applied. The OK, Apply, Reset and Cancel buttons have all been replaced with just a "Close" button. Those operations were essentially redundant with the comment editor window's support for "Undo" and "Redo" context (*right-click*) menu operations.

Below is the new RiverWare 7.1 Model Info dialog, illustrating the context menus in the Run History and Comment editor panels.



The "**Copy selected items**" operation copies the content of the selected run-history items to the system clipboard as a table in both "formatted" (HTML) and "unformatted" (plain text) variations. This is suitable for pasting into Excel or other spreadsheet, an e-mail message, or word processor. Most modern applications support a choice of which format to paste. *See the following illustration.*

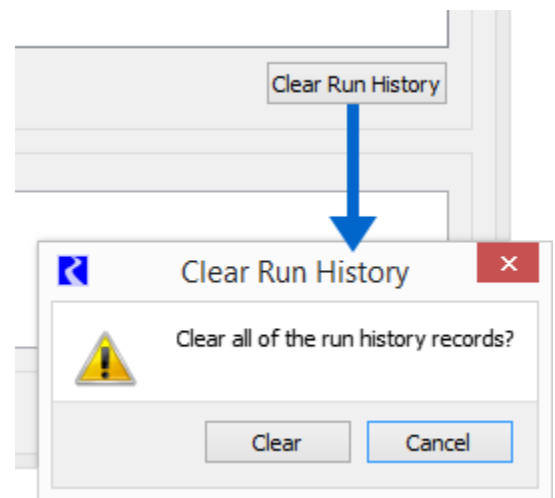
Version	User	Controller	Run Started	Run Duration	Run Status
RiverWare 7.1	philw	Simulation	12:08 February 4, 2017	8 seconds	Finished
RiverWare 7.1	philw	Simulation	12:05 February 4, 2017	2 seconds	Aborted
RiverWare 7.1	philw	Simulation	12:04 February 4, 2017	2 seconds	Aborted
RiverWare 7.1	philw	Simulation	12:03 February 4, 2017	5 seconds	Finished

Version	User	Controller	Run Started	Run Duration	Run Status
RiverWare 7.1	philw	Simulation	12:08 February 4, 2017	8 seconds	Finished
RiverWare 7.1	philw	Simulation	12:05 February 4, 2017	2 seconds	Aborted
RiverWare 7.1	philw	Simulation	12:04 February 4, 2017	2 seconds	Aborted
RiverWare 7.1	philw	Simulation	12:03 February 4, 2017	5 seconds	Finished

The maximum number of Run History items presented and saved in the model file can be modified by the user with the "**Retain information for ...**" integer spin-box. This user-modifiable maximum count is saved in the model file, along with the history items. The default value for this maximum count is one (1). The default value is restored when the RiverWare workspace is cleared.

Note that since *run history items are stored in the model file*, items for runs performed since the model load will be retained in the model file *only if* the model is subsequently re-saved.

The run history items can be cleared by clicking the "**Clear Run History**" button. This shows a popup dialog to confirm the "clear" operation. *See the screenshot to the right.*



Related Feature: Run History Model Report Item

Also recently developed for RiverWare 7.1 was support for showing this information in a RiverWare Model Report. This is currently limited to only the single most recent model run. This model report feature is described in more detail in this document:

- COE SWD Task 5 Model Report Enhancements for RiverWare 7.1 / Features
Section 3: New Model Report Item: Run History
R:\doc\Output\ModelReport\2017\CoeSwd5-ModelReportEnhance-71-Features.docx

Technical: RiverWare Model File Serialization

Below is an example of the Tcl-parsed serialization of: (a) feature configuration, and (b) run history data, within a RiverWare model file. Data for three (3) run history items are illustrated here.

```
$ws.Model.RunHistoryParam MaxModelRunHistoryRecs 10
$ws.Model.RunHistoryRecord 1 0 {RiverWare 7.1} {philw} \
{Simulation} {02-01-2017 20:16:05} {02-01-2017 20:16:06} {Finished}
$ws.Model.RunHistoryRecord 1 1 {RiverWare 7.1} {philw} \
{Simulation} {02-01-2017 20:16:08} {02-01-2017 20:16:09} {Finished}
$ws.Model.RunHistoryRecord 1 2 {RiverWare 7.1} {philw} \
{Simulation} {02-01-2017 20:17:27} {02-01-2017 20:17:29} {Aborted}
```

--- (end) ---