

SCT Default Font Simplification in RiverWare 7.1

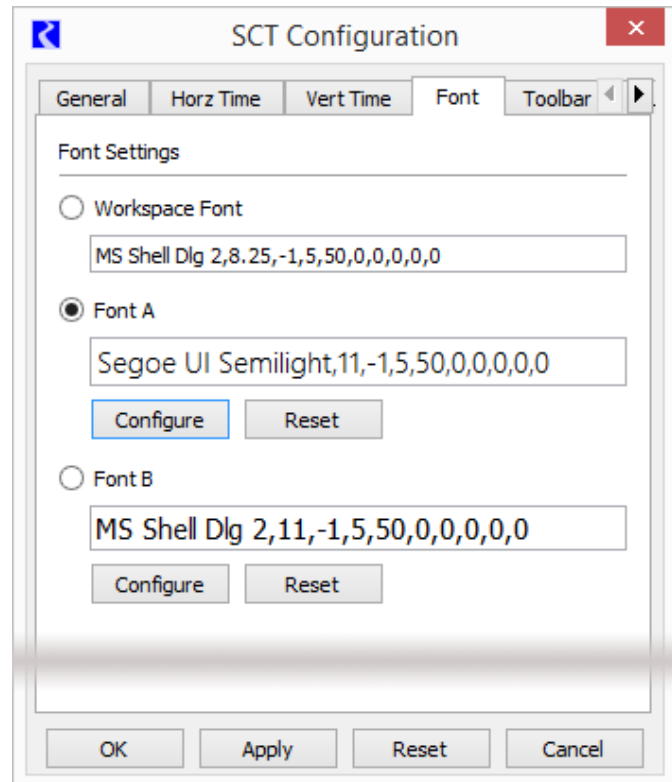
Phil Weinstein, David Neumann, Edie Zagona, CADSWES, 1-20-2017

R:\doc\sct\2017\Fonts\SctDefaultFontRedesign-Jan2017.docx

The former "Default Font" choice in the SCT Configuration dialog's "Font" tab has been renamed to "Workspace Font", and the effect of that choice has been simplified.

When "Workspace Font" is selected, the SCT uses the font of the RiverWare Workspace (which is used also by most other parts of the RiverWare user interface). With this selection, any changes to the Workspace's font are immediately reflected in the SCT.

The Workspace Font is set (just for the current RiverWare session) from the Workspace menu: "Utilities >> Windows >> Set Font ...". See the screenshots below.

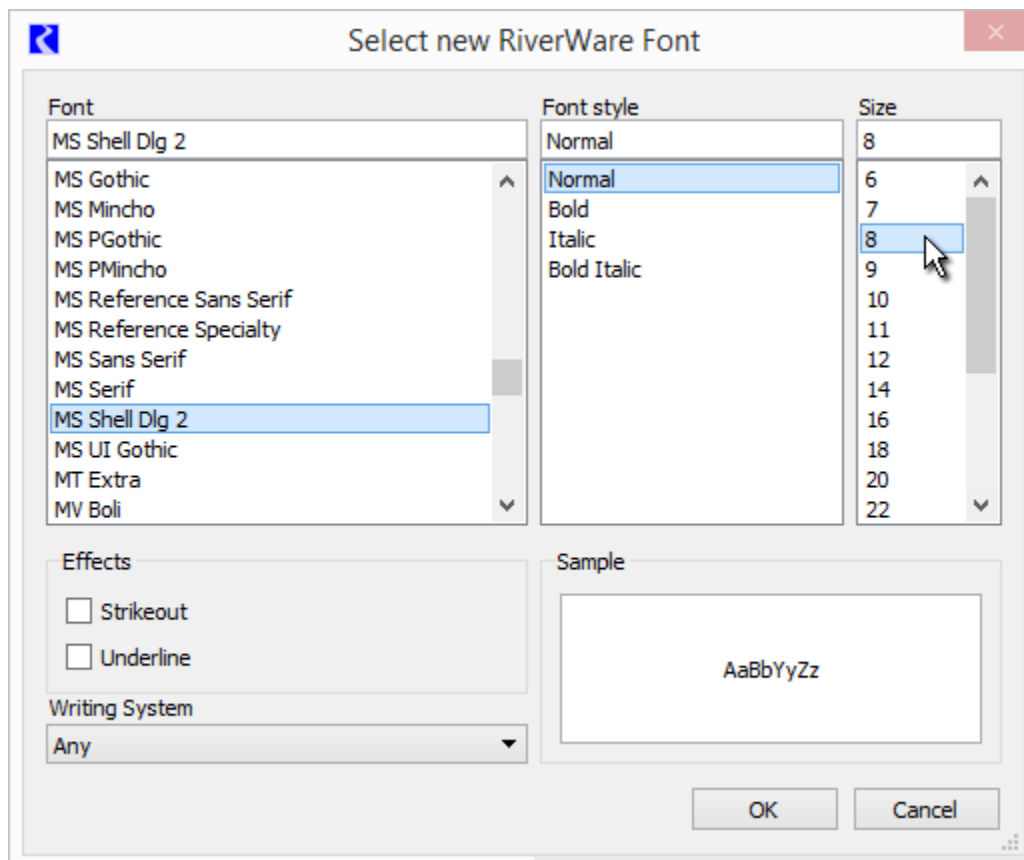
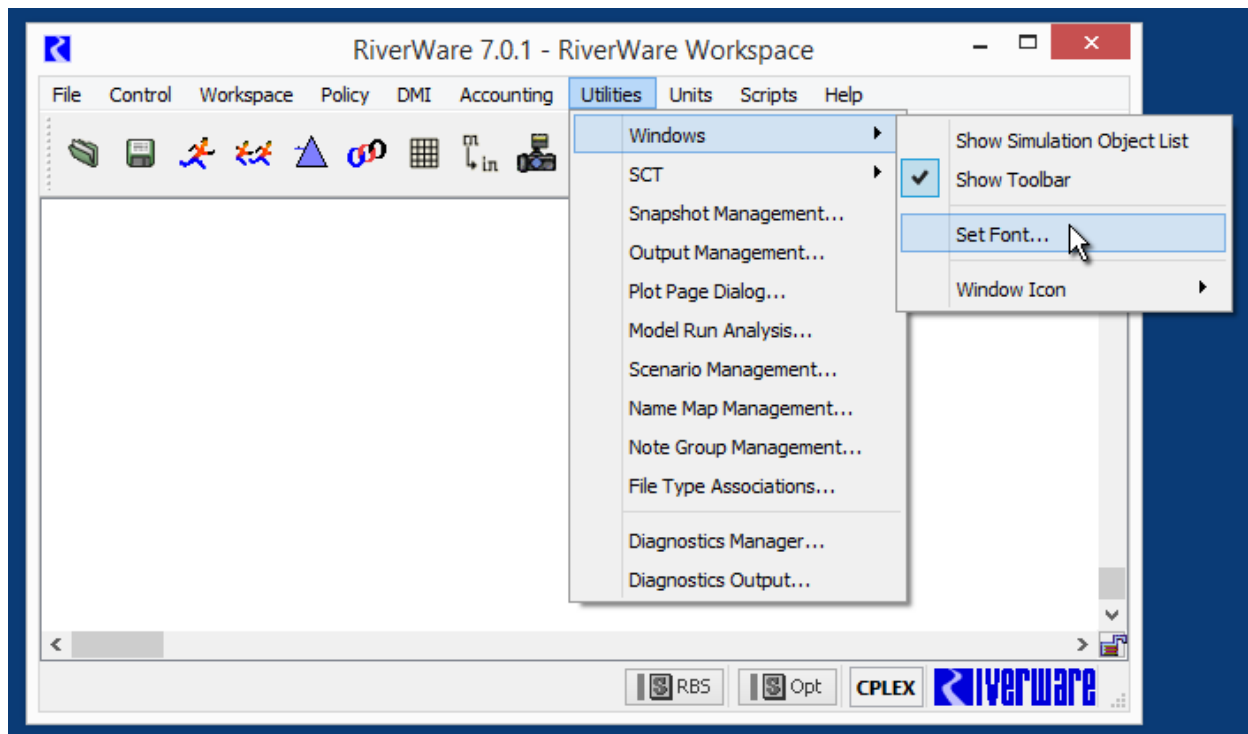


The "Reset" buttons associated with "Font A" and "Font B" assign the current Workspace Font's *font specification* to the respective custom font specification.

There is no longer any persistence, within the SCT configuration, of the font specification associated with this first font choice. The former use of that persistent font specification had not been well formulated, and didn't behave well when SCTs saved from versions of RiverWare based on Qt 4.8 were loaded in the latest RiverWare release (7.0.x) based on Qt 5.5, as the newer version of Qt has a somewhat different set of available fonts.

The font-related settings associated with SCT configurations -- including the "Default SCT configuration" -- consists of the following values:

1. The font choice selection, either: "Workspace Font" or "Font A" or "Font B"
2. The user-defined "Font A" font specification.
3. The user-defined "Font B" font specification.



--- (end) ---