

RiverWare: RPL Enhancements / Phil, March 2014

Phil Weinstein, CADSWES, edit 3-19-2014.

These RPL-related enhancements were implemented in March 2014:

1. RPL Object Selector Dialog Enhancement: Added Name Filter.
2. RplSet editor: New "Add To Report Group" context menu operation changed to Submenu.
3. "Show Rule (#)..." context menu operation in series displays (SCT, Open Series Slot, etc.)

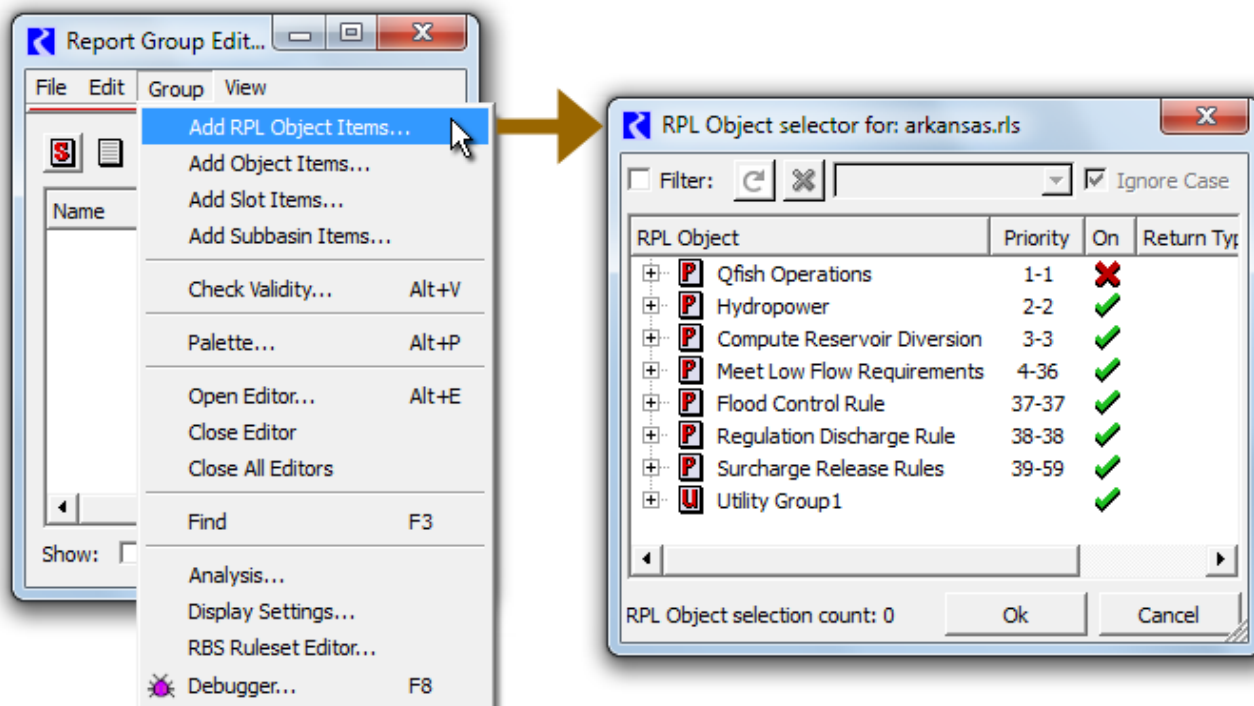
Also, these Series Flag display enhancements were implemented as part of this work (though not specific to "RPL" as such):

4. Show tooltips for all special flags (i.e. not just for rules, but excluding "Input" and "Output").
5. SCT now shows 'P', 'm' and 'A' flag letters for those Accounting Outputs.

(1) RPL Object Selector Dialog Enhancement: Added Name Filter.

A name filter, based on the filter design from the Diagnostic Output dialog, was added to the RPL Object Selector dialog.

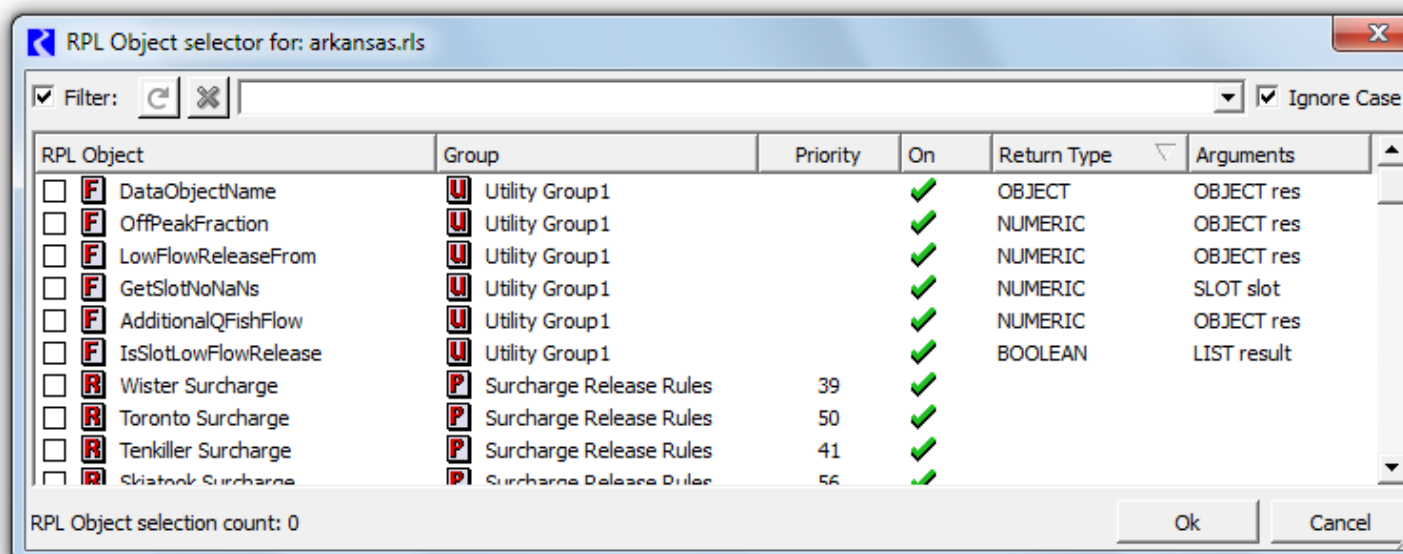
The RPL Object Selector is shown, for example, when clicking "Add RPL Object Report Items..." from a Report Group Editor. The top row of "Filter" controls in the selector dialog is new:



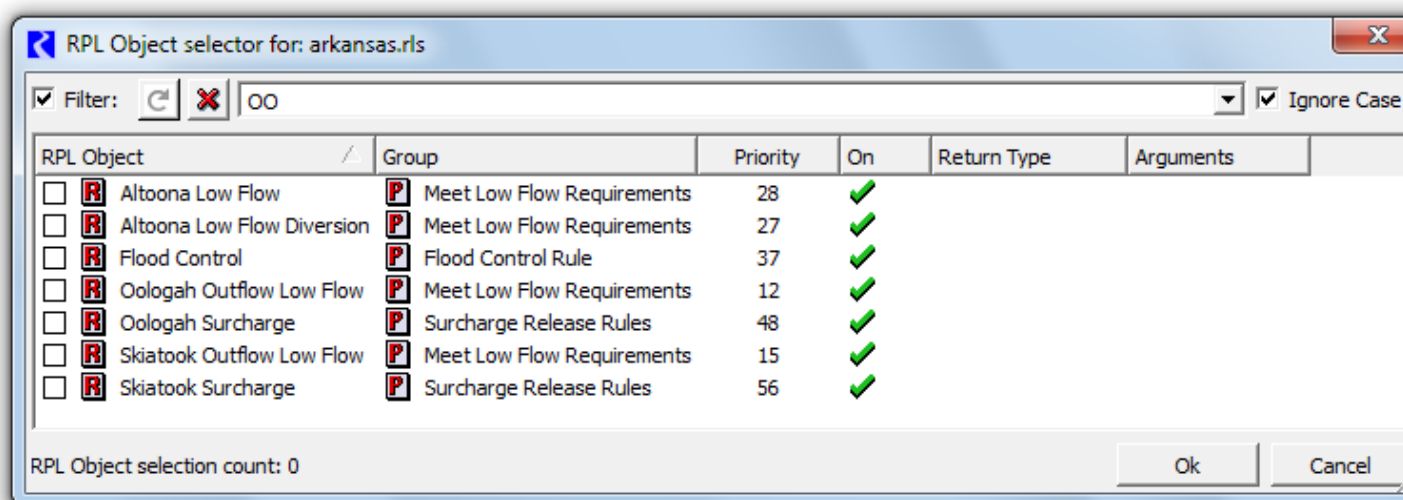
Turning the filter ON (by checking the "Filter" checkbox) has these effects. (See image below).

1. The RPL Objects (e.g. Rules and Functions) in the RplSet are shown in a flat list instead of in a tree, organized by RPL Group.
2. A "Group" column is shown.
3. Column sorting is enabled. (Sort by clicking in a column header; clicking again reverses the sort order).

When the filter specification is empty (in the editable combo box), all RPL Objects are listed (but with the changes indicated above).



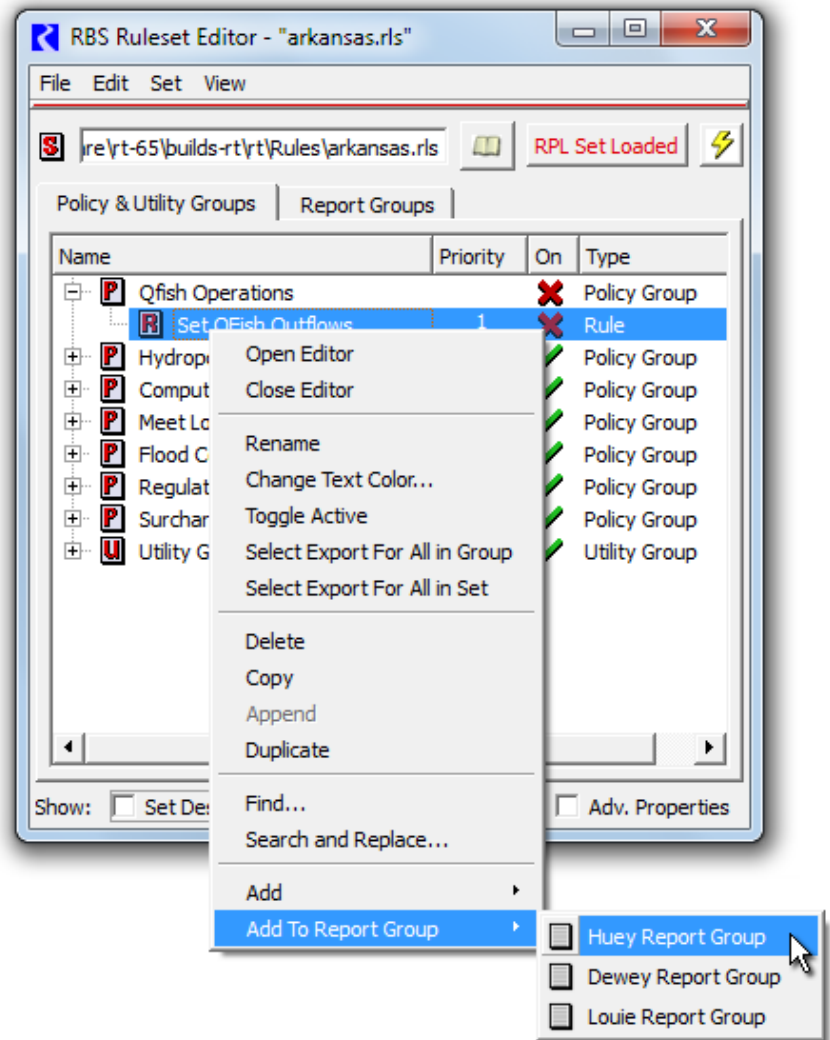
Entering filter text and clicking the "Apply Filter" (circle arrow icon) button -- OR picking prior filter text from the combo box control -- filters the results. Only RPL Objects whose name *contains* the filter text are shown. This can either be case sensitive or not, depending on the "[x] Ignore Case" checkbox. Clicking the Red-X icon button clears the filter string.



(2) RplSet editor: New "Add To Report Group" context menu operation changed to Submenu

In the RplSet editor, the new "Add To Report Group" context menu operation on Rpl Block items originally brought up the RPL Object Selector (*see above*) to choose a target Report Group within the RplSet -- i.e. to which to add the clicked item.

This has been changed to a *submenu* enumerating the existing Report Groups within the RplSet.

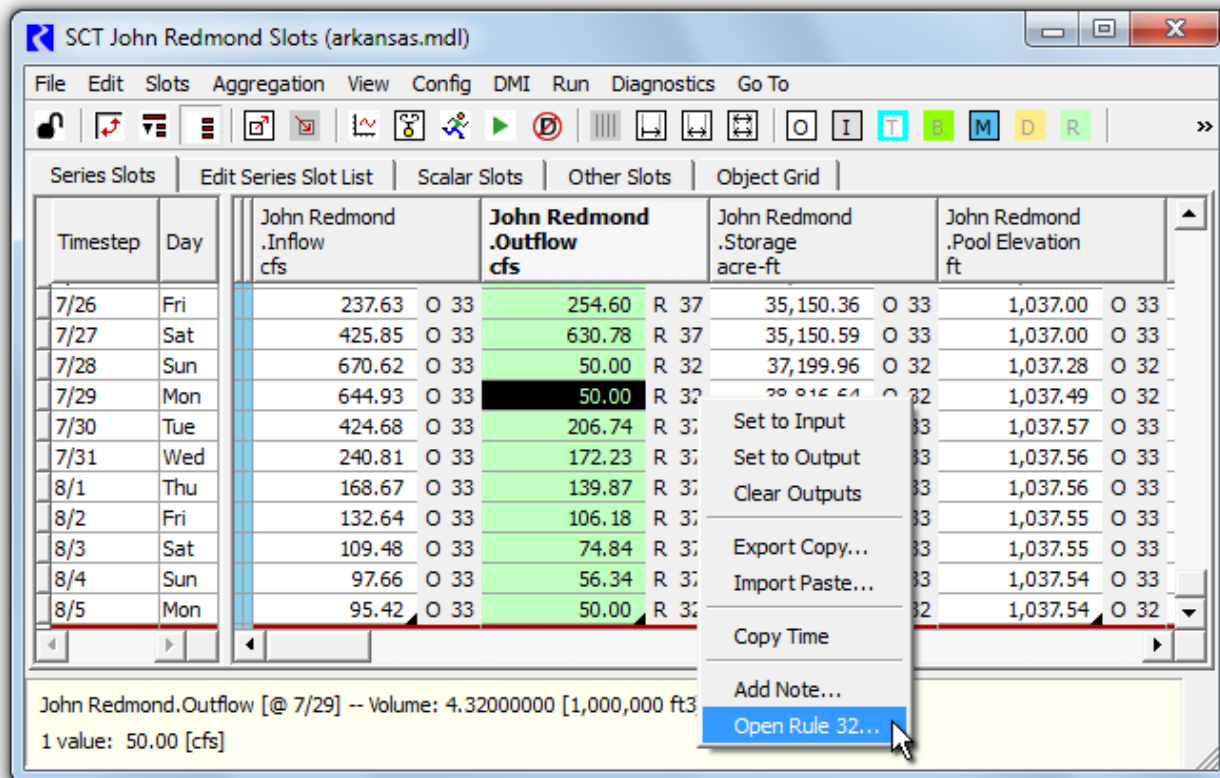
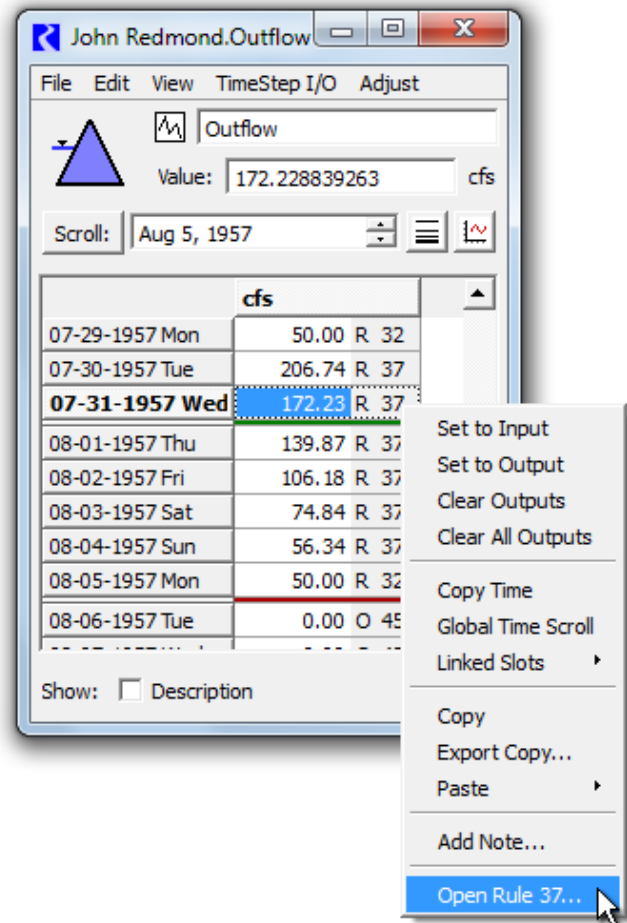


(3) "Show Rule (#)..." context menu operation in series displays (SCT, Open Series Slot, etc.)

The series data displays (SCT, Open Series Slot dialog, Edit Account dialog, etc.) support a new "Show Rule (#) ..." context menu operation on cells (slot timesteps) having a Rule Priority -- regardless of whether or not Priority Number display is enabled.

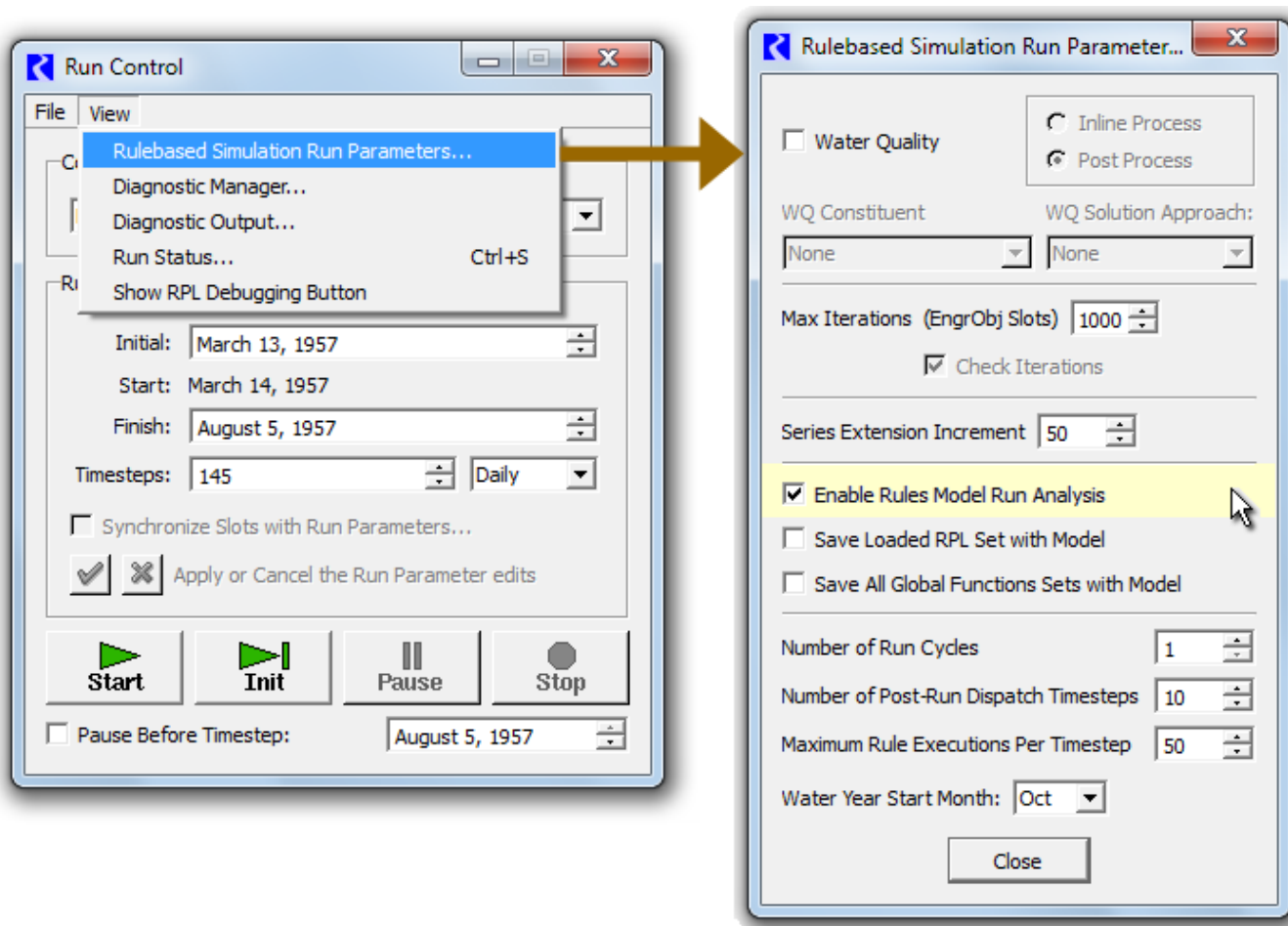
The screenshots to the right and below show this new context menu item in the Open Series Slot dialog and the SCT.

The *conditions described below* must be met for this context menu item to be enabled.



The "Open Rule (#)..." context menu operations will be enabled only if the following three conditions are met:

1. The RuleSet is resident (open or loaded),
2. Rules Model Run Analysis was enabled at the time of the last run (*see below*), and
3. A run was successfully completed within the current RiverWare session.



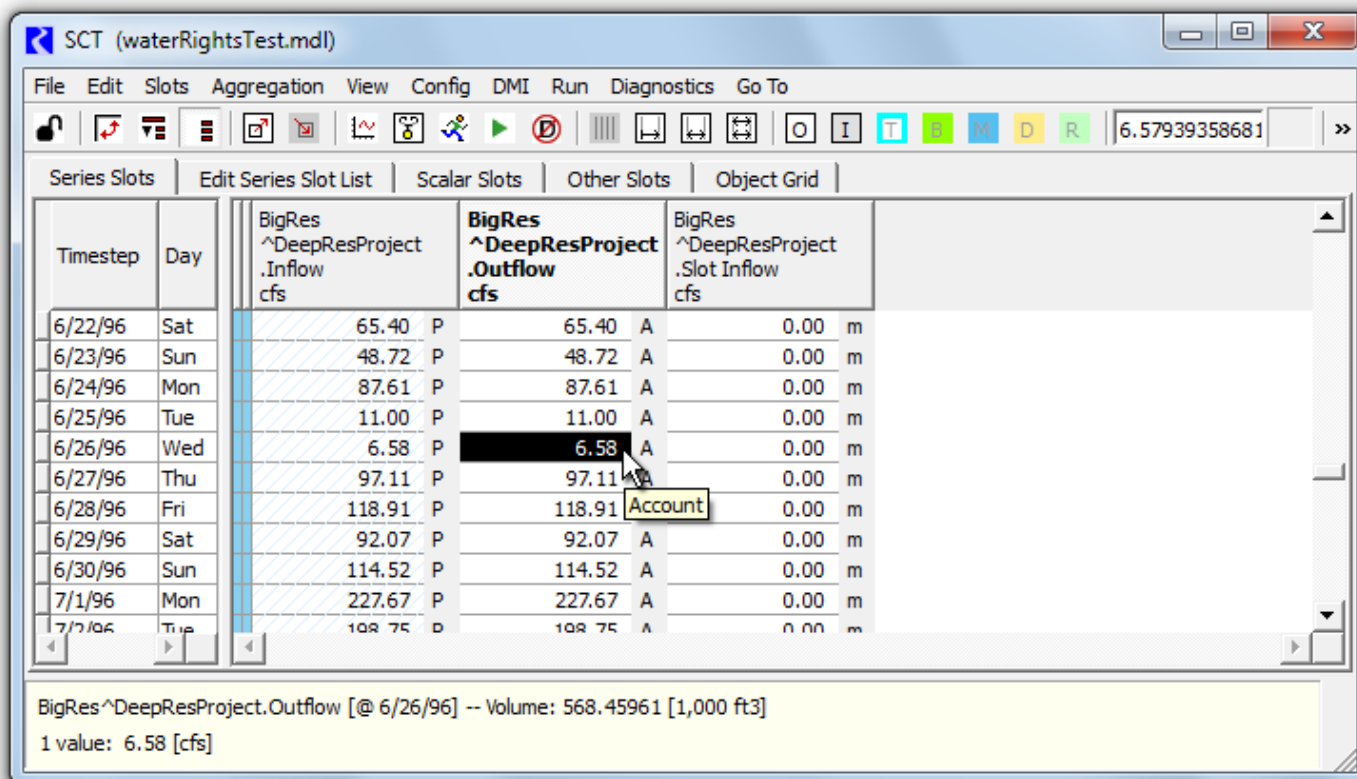
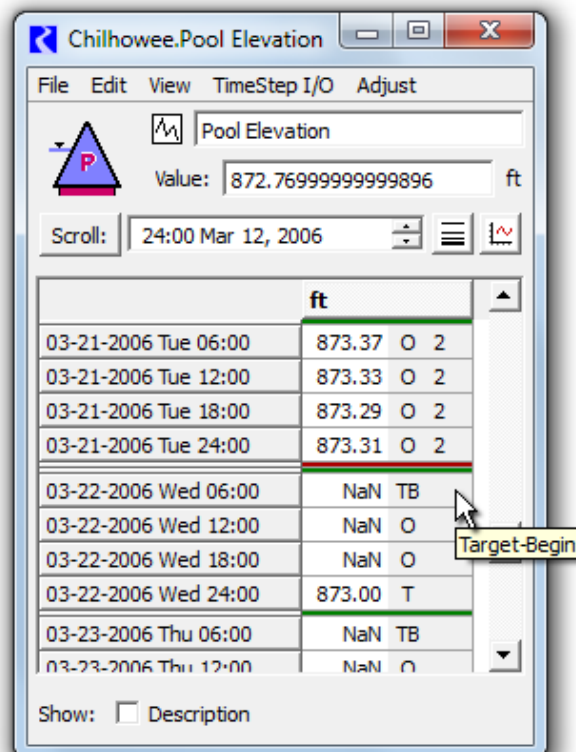
(4) Show tooltips for all special flags (i.e. not just for rules, but excluding "Input" and "Output").

In addition to the new *tooltips* on "Set by Rules" series slot timesteps (cells) in the series data displays, tooltips are also shown for all other flags -- *except* for "Input" or "Output".

(5) SCT now shows 'P', 'm' and 'A' flag letters for those Accounting Outputs.

Those Accounting Output Flags had been shown only as 'O' (Output) in the SCT because there were no flag buttons effectively providing a "legend" for those letters.

But now, since tooltips show the full names of those flags, these flag letters are shown in the SCT's series data table, instead of just 'O' for Output. *See below.*



--- (end) ---