

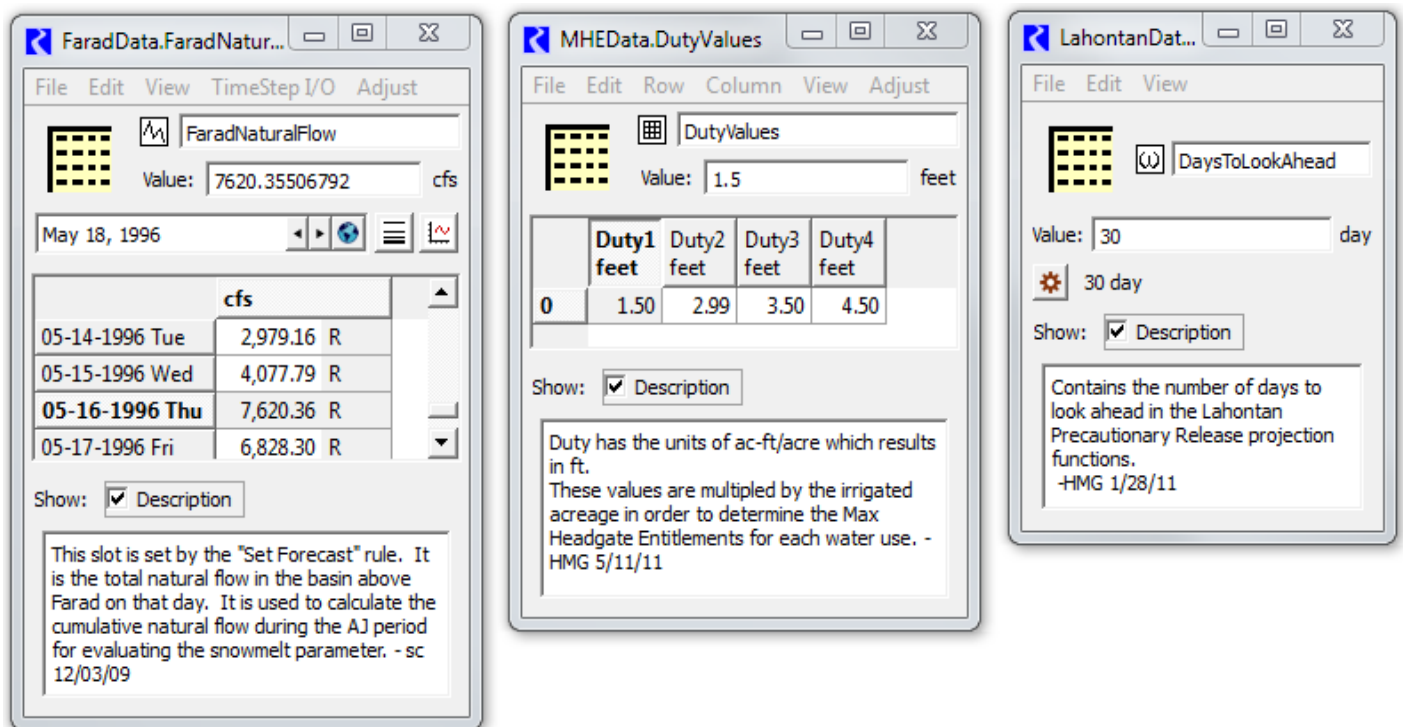
## RiverWare 6.6: Show Slot Descriptions in SCT / Features

Phil Weinstein, CADSWES, edit: 7-09-2014.

The RiverWare SCT was enhanced with features to show slot descriptions in, and from, the SCT. Two types of features were added:

1. Tooltips on slot items. When a slot description is shown as a tooltip, the original line-breaks are preserved *and* lines longer than 90 characters are split into multiple lines (i.e. long lines are *wrapped*).
2. New context menu operation: "Open Slot Description...". This shows the slot's Open Slot dialog with the Description panel open. This is where slot descriptions are provided by the user.

Below are three Open Slot Dialogs showing a user-supplied slot description.



Note that user-supplied description support is currently devised specifically for *physical* slots. Although *accounting* slots *can* be shown in an Open Slot dialog -- where slot description editing is supported -- accounting slots are normally shown instead in other, accounting-slot related dialogs.

The new tooltip and context-menu features were added to the following five SCT contexts -- on four tabs of the SCT.

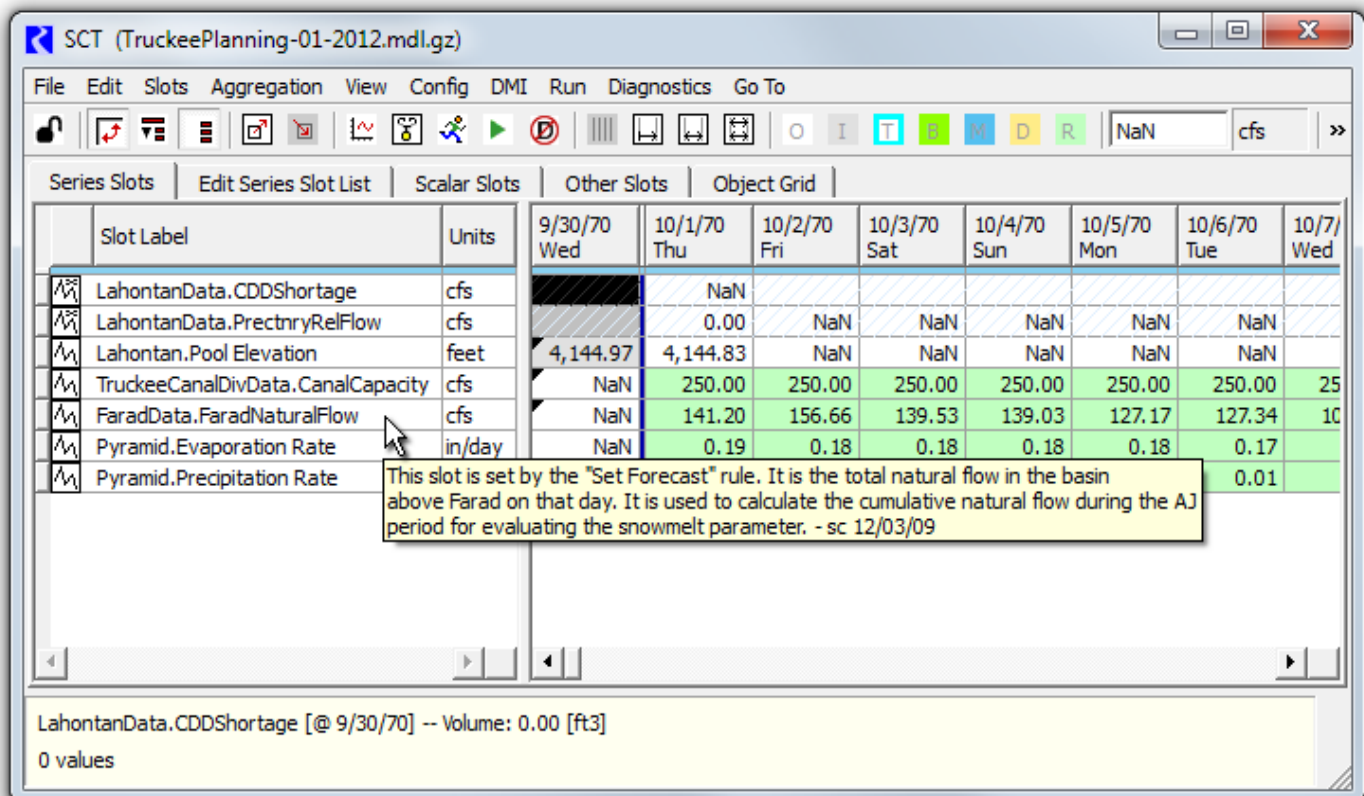
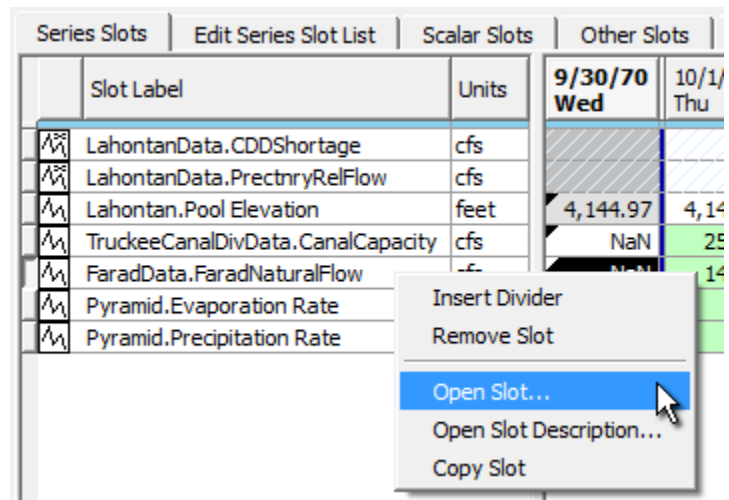
1. SCT Series Data Table (Series Slots) -- Horizontal Time Axis Orientation
2. SCT Series Data Table (Series Slots) -- Vertical Time Axis Orientation
3. SCT Edit Series Slot List Tab
4. SCT Scalar Slots Tab (including 1x1 Table Slots)
5. SCT "Other Slots" Tab (Table, Periodic and List Slots)

## (1) SCT Series Data Table (Series Slots) -- Horizontal Time Axis Orientation

These three operations were added to the slot row header context menu:

- Open Slot...
- Open Slot Description...
- Copy Slot

And a slot's description is shown as a tooltip on the slot label in the slot row header -- *see below*.



## (2) SCT Series Data Table (Series Slots) -- Vertical Time Axis Orientation

A context menu was added to the slot column headers with these three operations:

- Open Slot...
- Open Slot Description...
- Copy Slot

Series Slots		Edit Series Slot List	Scalar Slots	Other Slots	Object Grid
Timestep	Day	TruckeeCanalDivData .CanalCapacity cfs	FaradData .FaradNaturalFlow cfs	Pyramid .Evaporation Rate	
9/30/70	Wed	NaN			
10/1/70	Thu	250.00			
10/2/70	Fri	250.00			
10/3/70	Sat	250.00		139.53	0.

And a slot's description is shown as a tooltip -- *see below*.

SCT (TruckeePlanning-01-2012.mdl.gz)

File Edit Slots Aggregation View Config DMI Run Diagnostics Go To

Timestep	Day	TruckeeCanalDivData .CanalCapacity cfs	FaradData .FaradNaturalFlow cfs	Pyramid .Evaporation Rate in/day	Pyramid .Precipitation Rate in/day
9/30/70	Wed	NaN	NaN	NaN	NaN
10/1/70	Thu	250.00			
10/2/70	Fri	250.00			
10/3/70	Sat	250.00	139.53	0.18	0.01
10/4/70	Sun	250.00	139.03	0.18	0.01
10/5/70	Mon	250.00	127.17	0.18	0.01
10/6/70	Tue	250.00	127.34	0.17	0.01
10/7/70	Wed	250.00	107.33	0.17	0.01
10/8/70	Thu	250.00	129.16	0.17	0.01
10/9/70	Fri	250.00	213.83	0.17	0.01
10/10/70	Sat	250.00	149.70	0.17	0.01

This slot is set by the "Set Forecast" rule. It is the total natural flow in the basin above Farad on that day. It is used to calculate the cumulative natural flow during period for evaluating the snowmelt parameter. - sc 12/03/09

FaradData.FaradNaturalFlow -- Volume: 557.88511680 [1,000,000,000 ft3] -- (6787 obscured pre-sim timesteps)  
11050 values: Sum 6,457,003.67 -- Ave 584.34 -- Min 19.15 -- Max 25,682.47 -- Range 25,663.31 [cfs]

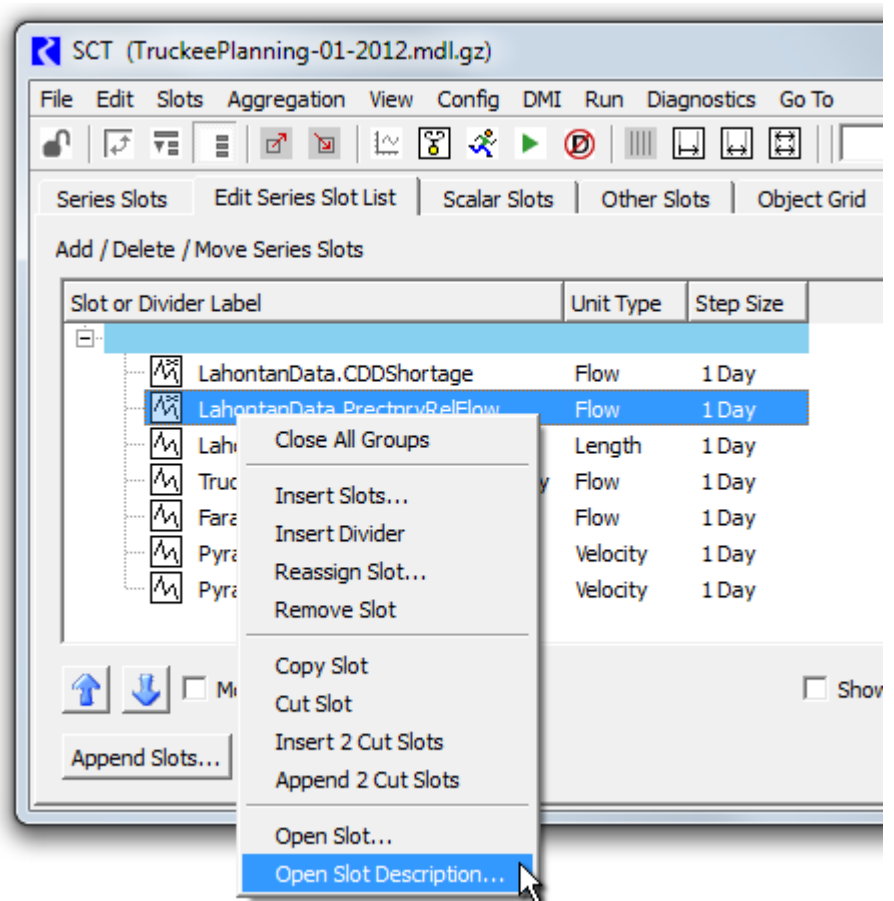
### (3) SCT Edit Series Slot List Tab

These two context menu operations were added to slot items in the SCT EditSeries Slot List tab.

- Open Slot...
- Open Slot Description...

And a slot's description is shown as a tooltip -- *not illustrated here*.

**ADDITIONAL ENHANCEMENT:** A "**Step Size**" column was added to the SCT Edit Series Slot tab. This is especially useful because the SCT series data table can support only one step size at any one time. Series slots which don't match that step size are grayed-out, but the reason is not indicated. (Another reason could be that the slot item -- specified using a complete slot name -- doesn't actually exist in the model).

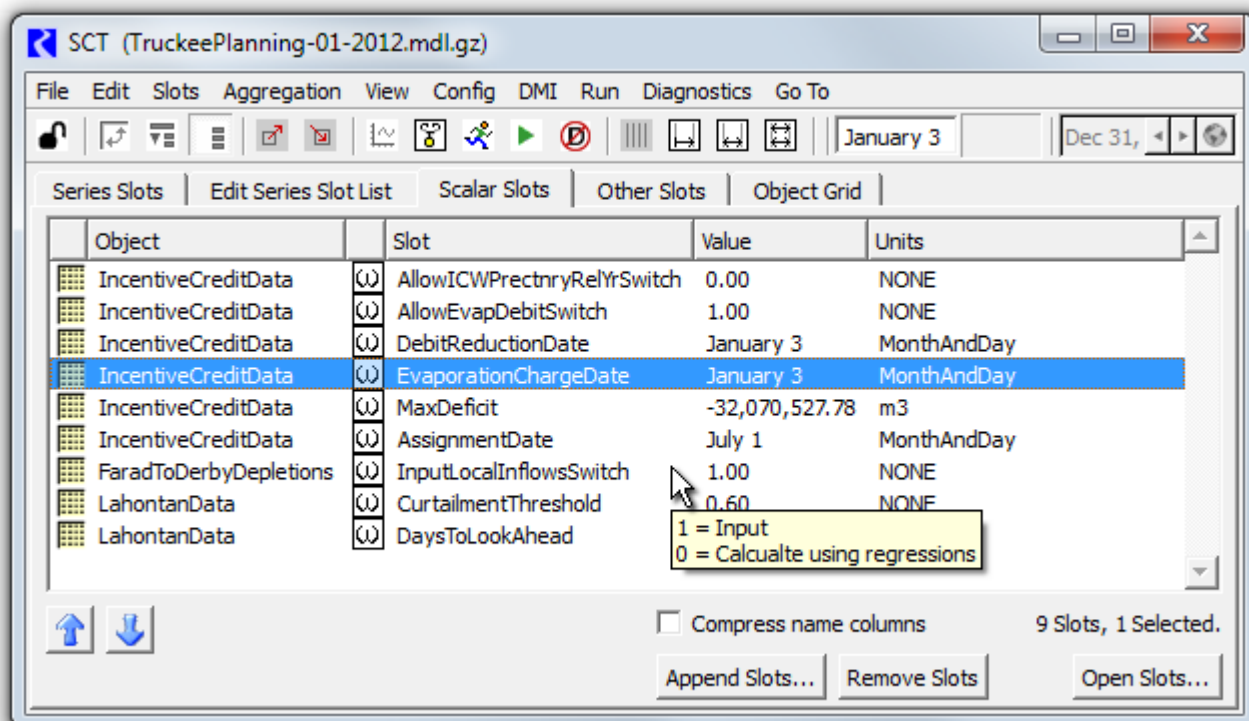
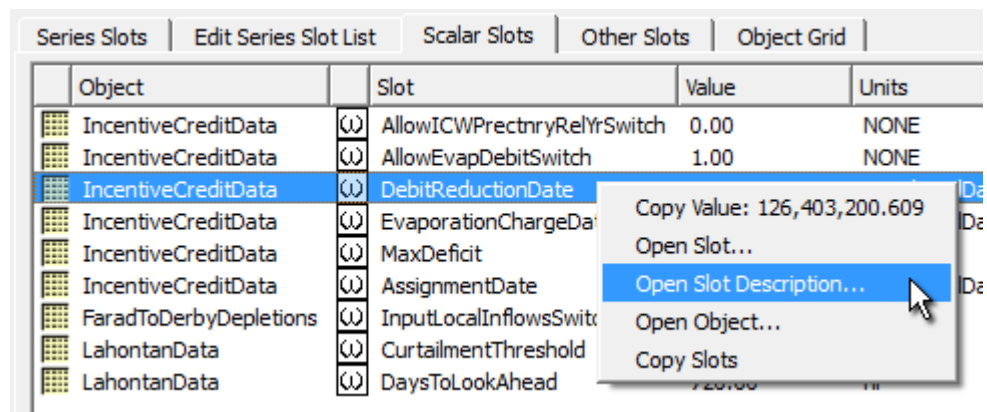


**(4) SCT Scalar Slots Tab (including 1x1 Table Slots)****(5) SCT "Other Slots" Tab (Table, Periodic and List Slots)**

These following operation was added to the slot row header context menu:

- Open Slot Description...

And slot descriptions are shown as tooltips -- *see below.*



--- (end) ---