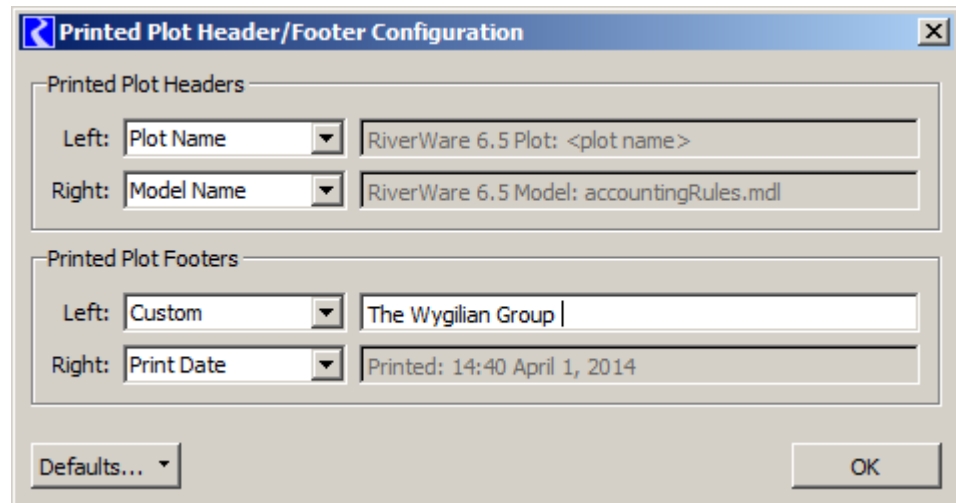


## RiverWare 6.5: Printing Plots: User Configurable Headers and Footers

This document describes a new capability in RiverWare to configure headers and footers generated in printed plot output.

For each corner of the printed page, the user can choose between several types of content, including user-supplied text.



The dialog box is titled "Printed Plot Header/Footer Configuration". It contains two main sections: "Printed Plot Headers" and "Printed Plot Footers".

**Printed Plot Headers:**

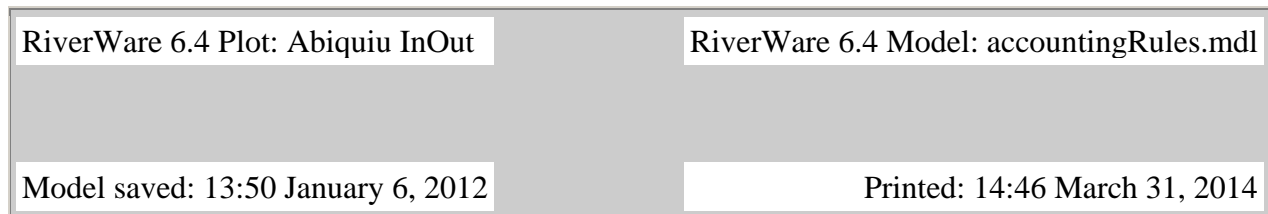
- Left: Plot Name (dropdown) | RiverWare 6.5 Plot: <plot name>
- Right: Model Name (dropdown) | RiverWare 6.5 Model: accountingRules.mdl

**Printed Plot Footers:**

- Left: Custom (dropdown) | The Wygillian Group
- Right: Print Date (dropdown) | Printed: 14:40 April 1, 2014

At the bottom, there is a "Defaults..." button on the left and an "OK" button on the right.

In RiverWare 6.4 and earlier versions, plots unconditionally included header and footer text in all four corners of the printed page. Here is an illustration:



The illustration shows a rectangular plot area with a light gray background. In the four corners, there are white rectangular boxes containing text:

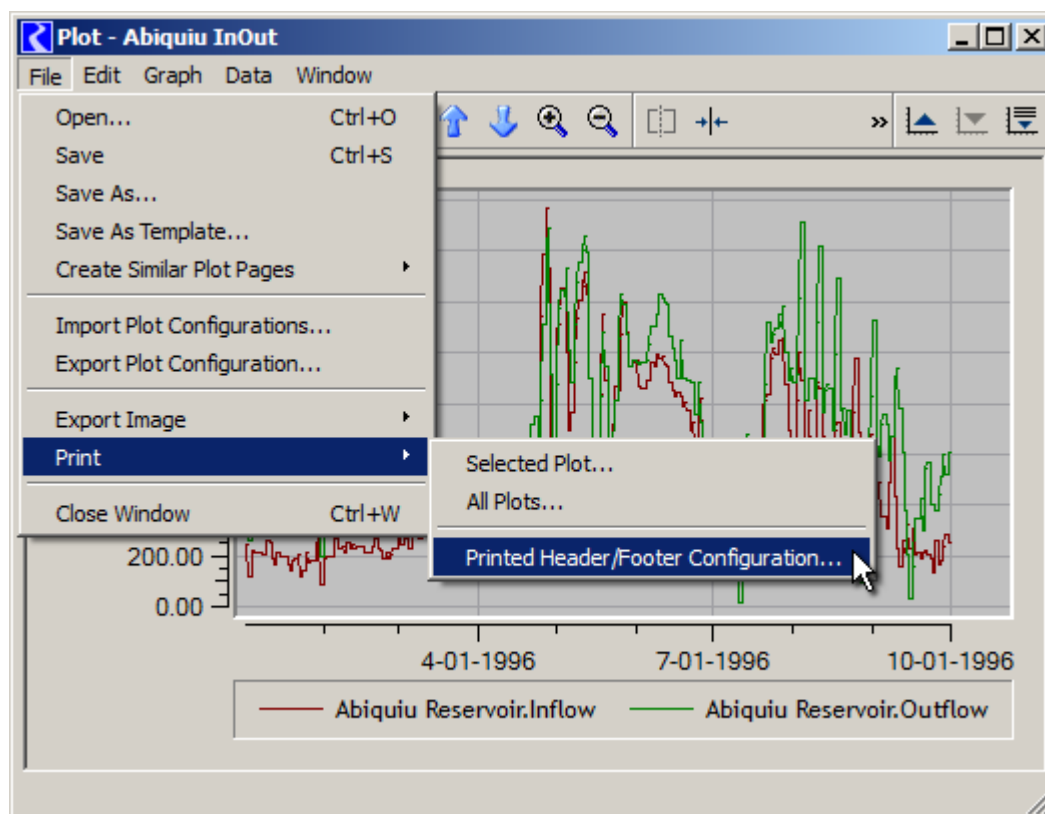
- Top-left: RiverWare 6.4 Plot: Abiquiu InOut
- Top-right: RiverWare 6.4 Model: accountingRules.mdl
- Bottom-left: Model saved: 13:50 January 6, 2012
- Bottom-right: Printed: 14:46 March 31, 2014

In RiverWare 6.5, Plot Pages now have an associated configuration for the headers and footers included in printed output. For EACH of the four corners of the printed page, the user can choose between these options:

1. None
2. Custom -- *user supplied text*
3. Plot Name -- *either Plot Page Name or single-plot's Plot Title*
4. Model Name
5. Model Save Date
6. Print Date

The latter four options generate the same text as before (but can be assigned to any of the four corners).

A new "Printed Header/Footer Configuration" dialog is accessed via the File >> Print submenu:



Although the configuration dialog is accessed via the File >> Print submenu, the header/footer configuration settings are associated with the saved plot page.

The screenshot shows the 'Printed Plot Header/Footer Configuration' dialog box. It is divided into two sections: 'Printed Plot Headers' and 'Printed Plot Footers'.  
In the 'Printed Plot Headers' section:  
- Left: 'Plot Name' dropdown is set to 'Plot Name', and the text field contains 'RiverWare 6.5 Plot: <plot name>'.  
- Right: 'Model Name' dropdown is set to 'Model Name', and the text field contains 'RiverWare 6.5 Model: accountingRules.mdl'.  
In the 'Printed Plot Footers' section:  
- Left: 'Model Save Date' dropdown is set to 'Model Save Date', and the text field contains 'Model saved: 01:07 November 5, 2013'.  
- Right: 'Print Date' dropdown is set to 'Print Date', and the text field contains 'Printed: 14:40 April 1, 2014'.  
At the bottom left is a 'Defaults...' button, and at the bottom right is an 'OK' button.

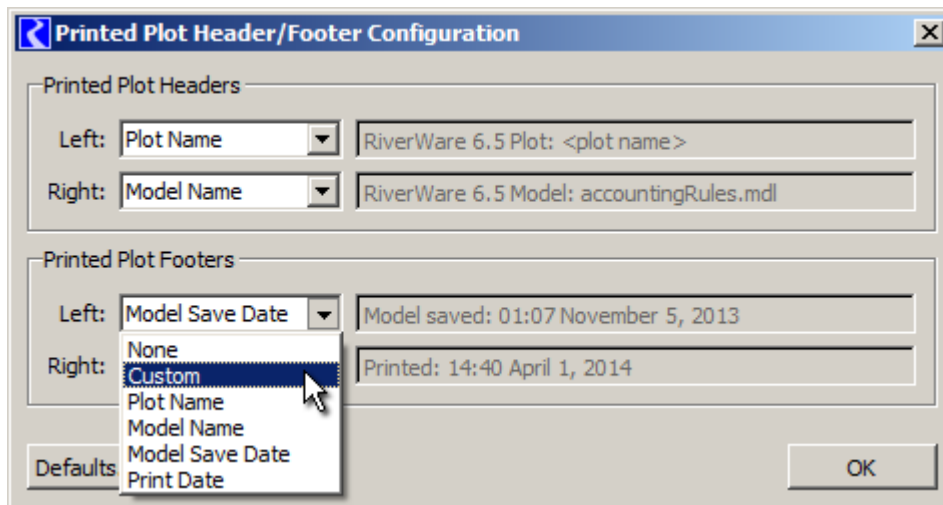
Note: The text generated for the "Plot Name" content type depends on the operation with which the plot print was initiated. As illustrated above, these two "Print" operations are supported from the Plot Dialog:

1. File >> Print >> Selected Plot ...
2. File >> Print >> All Plots...

When the "Selected Plot" operation is used, the Plot Name is the selected plot's Title.

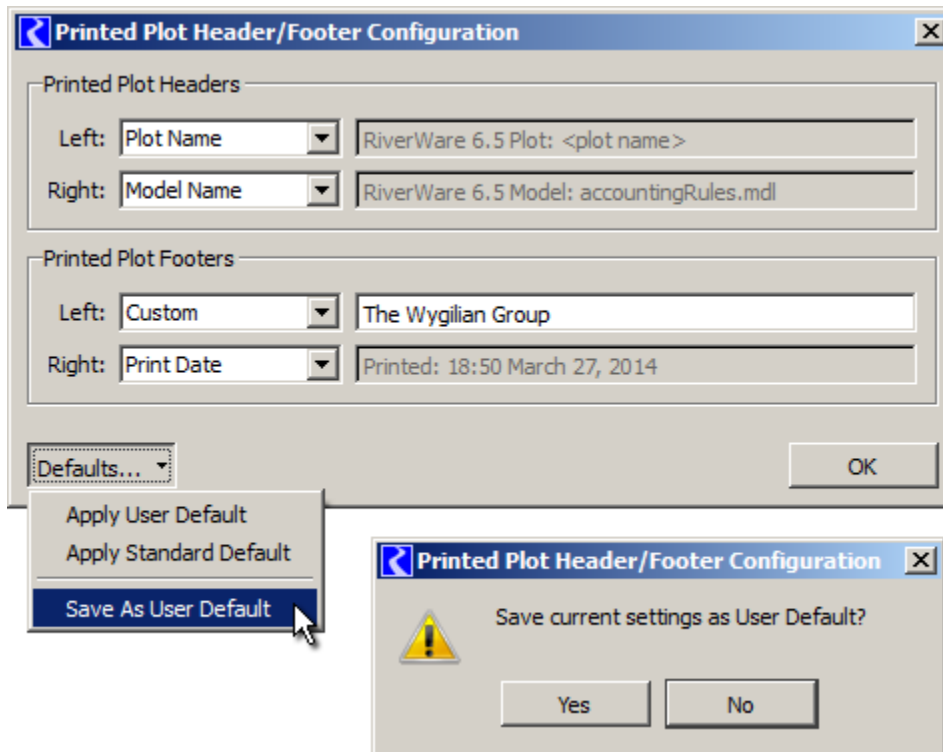
When the "All Plots" operation is used, the Plot Name is the name of the Plot Page (i.e. the name with which the Plot Page is saved within the RiverWare Model). If the Plot Page has not yet been saved, the page's name is "Unsaved Plot".

This distinction applies even if the Plot Page has only a single Plot.



The configuration dialog supports these Default operations:

1. Apply User Default
2. Apply Standard Default
3. Save As User Default ... (*with user confirmation*).



The "Standard Default" provides the same functionality as prior RiverWare versions (6.4 and earlier).

The "User Default" is set by saving the displayed settings ("As User Default") and is stored in user-login-based settings.

## Technical Note: Persistence

A Plot Page's printed header/footer settings are part of its PlotPageInfo record, stored in the model file with Tcl-encoding.

The User Default is saved in user-based settings (via Qt4 QSettings, on Windows this is stored in the registry).

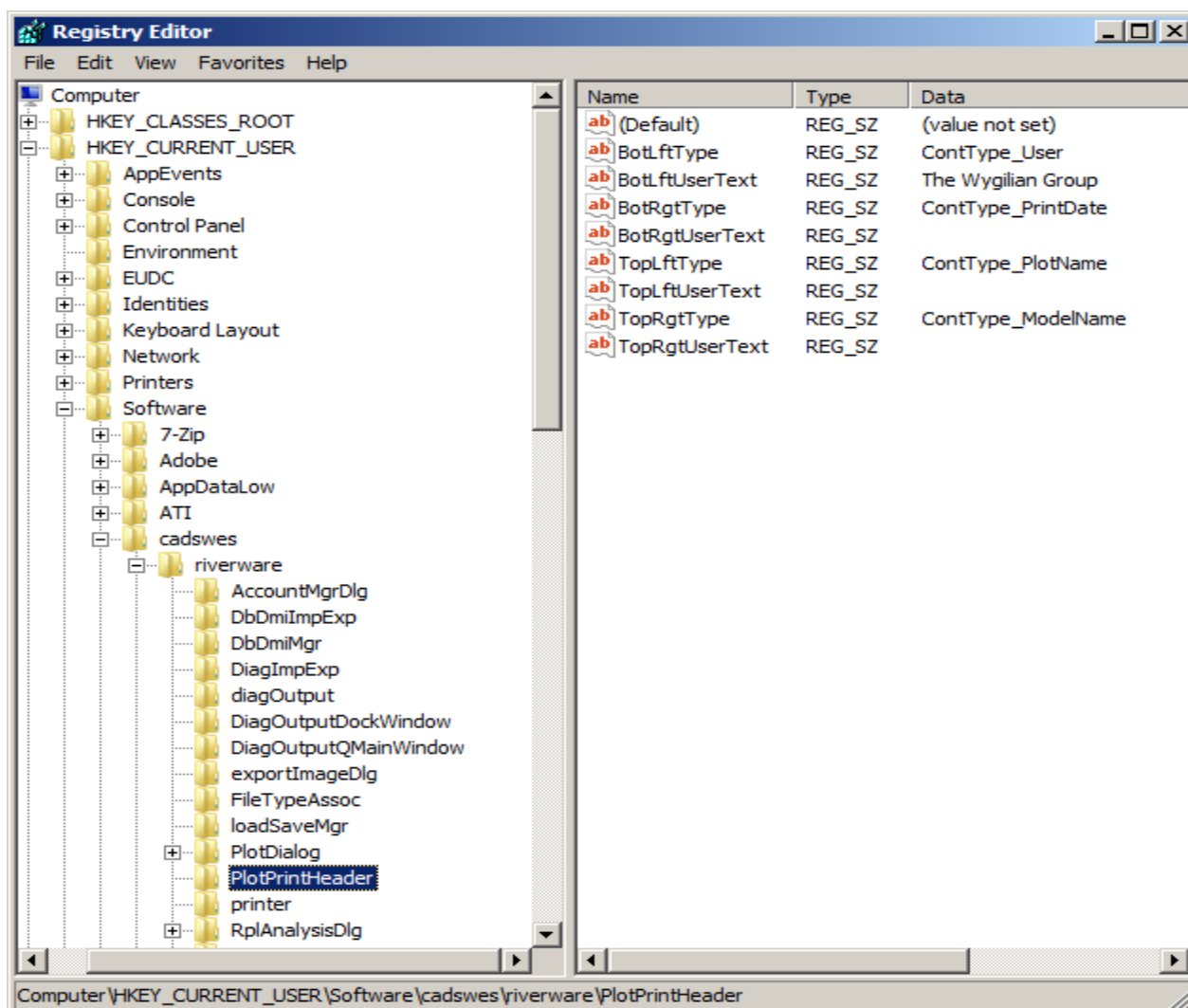
Illustrations of these persistence representations follow.

New PlotPage Printed Header/Footer Configuration (3-27-2014)

Model File excerpt (See four lines with "PlotPrintHdrCfg").

... ..

```
$ws.outputDeviceMgr addPlotPage {Abiquiu InOut}
set plotpage "$ws.outputDeviceMgr.PlotPageInfo.Abiquiu InOut"
"$plotpage" description {}
"$plotpage" layout 1 1
"$plotpage" PlotPrintHdrCfg TopLeft ContType_PlotName {}
"$plotpage" PlotPrintHdrCfg TopRight ContType_ModelName {}
"$plotpage" PlotPrintHdrCfg BottomLeft ContType_User {The Wygilian Group}
"$plotpage" PlotPrintHdrCfg BottomRight ContType_PrintDate {}
"$plotpage" plot 0
set plot "$plotpage.0"
"$plot" state {} 4290822336 1 0
... ..
```



--- (end) ---